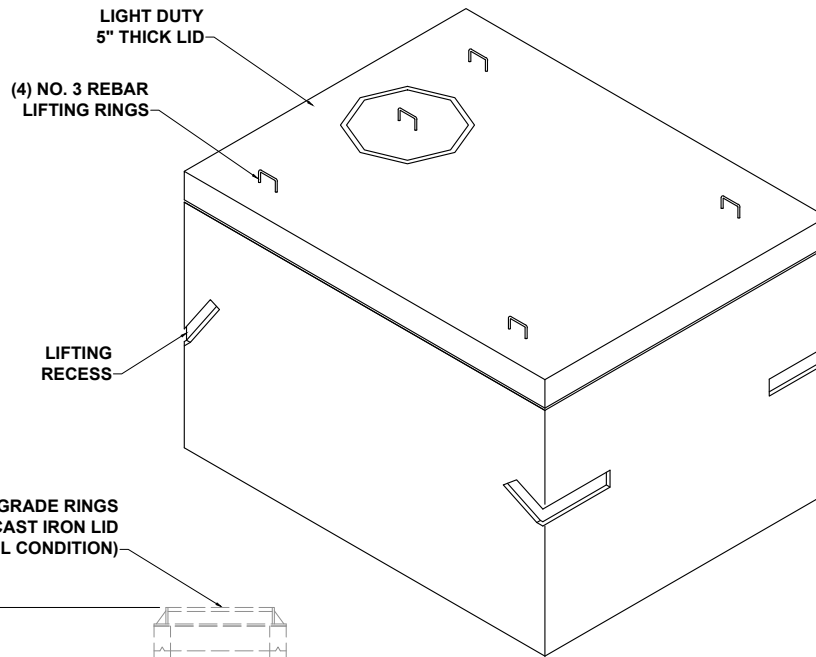
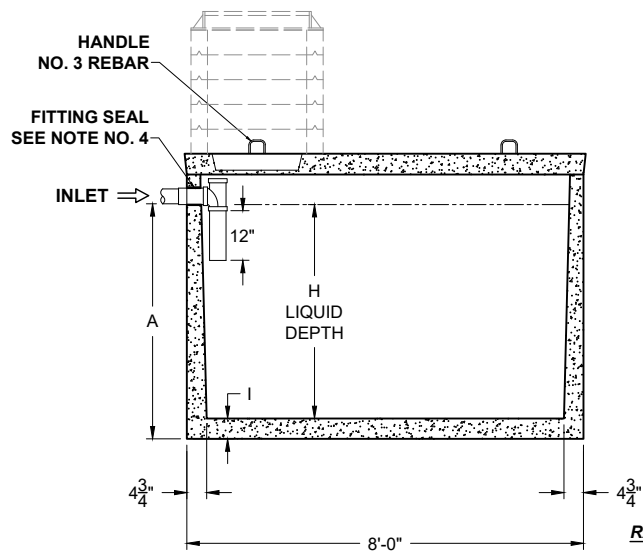


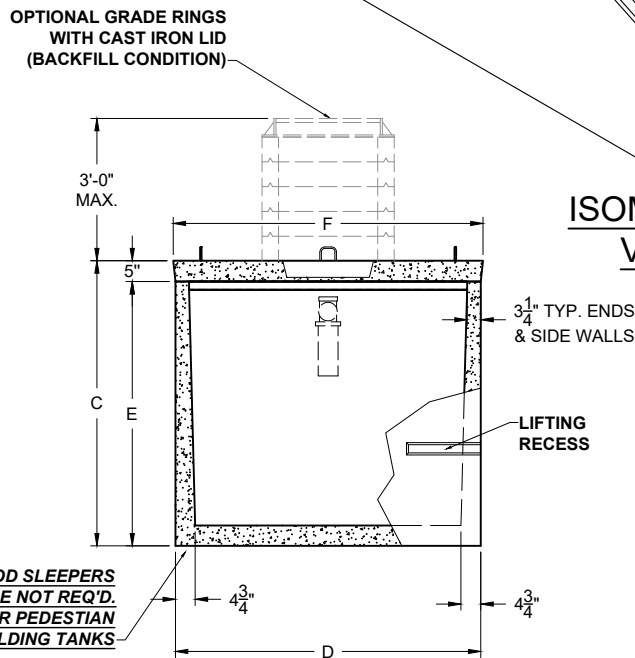
PLAN VIEW



ISOMETRIC VIEW



SECTION THRU "A-A"



SECTION THRU "B-B"

**PEDESTRIAN RATED
 "LIGHT DUTY"**

| ALL DIMENSIONS ARE IN INCHES & WEIGHTS IN LBS - (RISER WT. NOT INCLUDED) | | | | | | | | | | EXCAVATION SPECIFICATIONS | | | | |
|--|--------|--------|--------|----|--------|----|--------|--------|-------|---------------------------|--------|--------|-------------|-------------|
| MODEL | A | B | C | D | E | F | G | H | I | APPROX. WEIGHT | LENGTH | WIDTH | BELOW INLET | TANK HEIGHT |
| PC H-1-750 | 38 | 36 | 50 | 74 | 45 | 75 | 19 3/4 | 31 1/2 | 4 1/2 | 11,305 | 11'-0" | 9'-2" | 3'-2" | 4'-2" |
| PC H-1-1000 | 48 | 46 | 60 | 74 | 55 | 75 | 24 3/4 | 41 1/2 | 4 1/2 | 12,660 | 11'-0" | 9'-2" | 4'-0" | 5'-0" |
| PC H-1-1250 | 57 | 55 | 69 | 74 | 64 | 75 | 29 1/4 | 50 1/2 | 4 1/2 | 13,875 | 11'-0" | 9'-2" | 4'-9" | 5'-9" |
| PC H-1-1500 | 60 1/2 | 58 1/2 | 72 1/2 | 85 | 67 1/2 | 86 | 30 3/4 | 53 1/2 | 5 | 16,220 | 11'-0" | 10'-1" | 5'-0 1/2" | 6'-0 1/2" |

**PRODUCT NAME:
 HOLDING TANK**

**DESCRIPTION:
 750 THRU 1500 GALLONS
 PEDESTRIAN RATED**

DESIGN SPECIFICATIONS

**DESIGN LOAD: PEDESTRIAN
 (300 PSF)**

WITH DRY SOIL CONDITIONS (WATER LEVEL BELOW TANK). SUITABLE SUB-BASE BEDDED WITH GRANULAR MATERIAL SHALL BE PREPARED TO HANDLE ANTICIPATED LOADS. FOR COMPLETE DESIGN AND PRODUCT INFORMATION, PLEASE CONTACT PRO-CAST PRODUCTS.

PRO-CAST PRODUCTS RESERVES THE RIGHT TO MAKE CHANGES TO PRODUCT DESIGN AND/OR DIMENSIONS WITHOUT NOTICE. PLEASE CONTACT PRO-CAST PRODUCTS WHENEVER NECESSARY FOR CONFIRMATION OR ADVICE ON PRODUCT DESIGN.

NOTES:

1. NOT USED
2. REFER TO SPECIFICATION SHEET NOS. S-251 & S-252
3. REFER TO SPECIFICATION SHEET NO. S-201
4. REFER TO SPECIFICATION SHEET NO. S-250

SCALE: DO NOT SCALE
DRAWN BY: TPC 12.20.2024
REVISED BY:
CHECKED BY:

DRAWING NO. H-001